



THE GOOD, BAD, ??

AI

**A LITTLE REMOTE WORK, LLM'S, AI, AGI,
AND TECH IN HR**





Illinois State University
is not responsible for
the content or the
opinions shared within
this presentation.

All content is that of the
presenter and/or
generated by AI

CONTENT

01

BRIEF HISTORY REMOTE/HYBRID

02

BENEFITS AND CONCERNS

03

REMOTE ACTIVITIES IN CLASS

04

OTHER OPPORTUNITIES



CONTENT

01

BRIEF HISTORY OF AI (AGI)

02

BUGS AND CONCERNS

03

APPLICATION IN THE FIELD (HR)

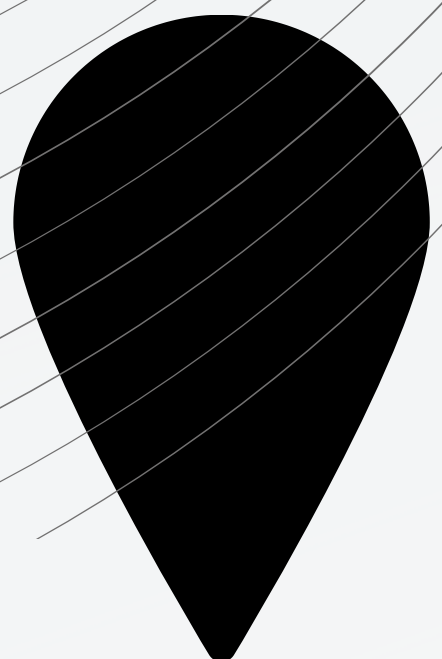
04

PROMPT ENGINEERING MNEMONIC



We couldn't verify the security of your connection.

Access to this content has been restricted. Contact your internet service provider for help.



1964

AT&T Picturephone



1992

CU SeeMe



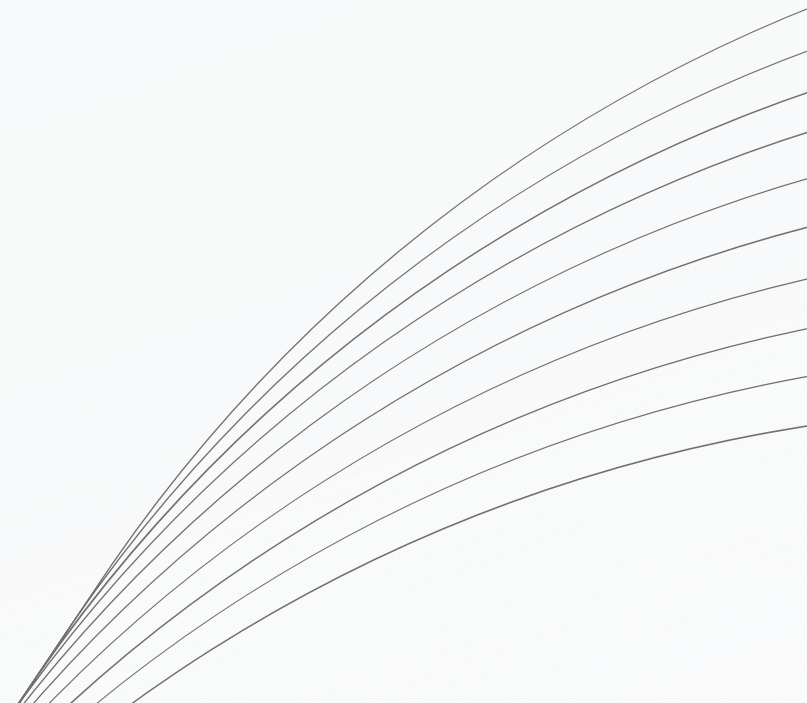
1995 - 2004

Webex & GoToMeeting



2010'S-20

Zoom









Item/Category	Monthly Cost	Weekly Cost	Per Check Amt	Monthly Salary Needed	Hourly Rate Needed	Annual Needed
				\$ 3,838.44	\$ 22.19	\$ 46,061.25
Rent	\$ 852.00		\$ 450.00			
Groceries		\$ 100.00	\$ 200.00			
Cable/Internet	\$ 45.00		\$ 25.00			
Other utilities	\$ 80.00		\$ 40.00			
Phone / phone plan				Monthly Saving/Planning	Annual Retirement Saved	Travel Money Annually
Car/renters Insurance?	\$ 5.00		\$ 2.50	\$ 275.00	\$ 360.00	\$ 2,100.00
Car payment / Car savings		\$ 105.00				
Transportation/Parking (gas, metra pass, etc.)		\$ 40.00				
Long term savings / 401k / 403b (retirement)	\$ 30.00		\$ 15.00			
Long term savings you can touch	\$ 50.00		\$ 25.00			
Mid-term savings (big items like pc/bike/etc.)	\$ 100.00		\$ 25.00			
Health Savings (MCAP, etc.)	\$ 10.00		\$ 5.00			
Current Credit Card	\$ 50.00					
Clothing	\$ 50.00		\$ 25.00			
Dining out / Door Dashing		\$ 40.00	\$ 15.00			
Happy Hour / fun night		\$ 40.00	\$ 15.00			
Entertainment (sports, video games, shows)	\$ 50.00		\$ 25.00			
Gym / Exercise / Tanning	\$ 75.00					
Subscriptions (Spotify, Apps, Streaming)	\$ 25.00					
Travel - probably take two trips, divide total cost by 12	\$ 175.00		\$ 87.50			
Other unexpected or spontaneous	\$ 125.00					
Subtotals	\$ 1,722.00	\$ 325.00				
Monthly Spending Totals	\$ 3,070.75					

CONTENT

01

BRIEF HISTORY OF AI (AGI)

02

BUGS AND CONCERNS

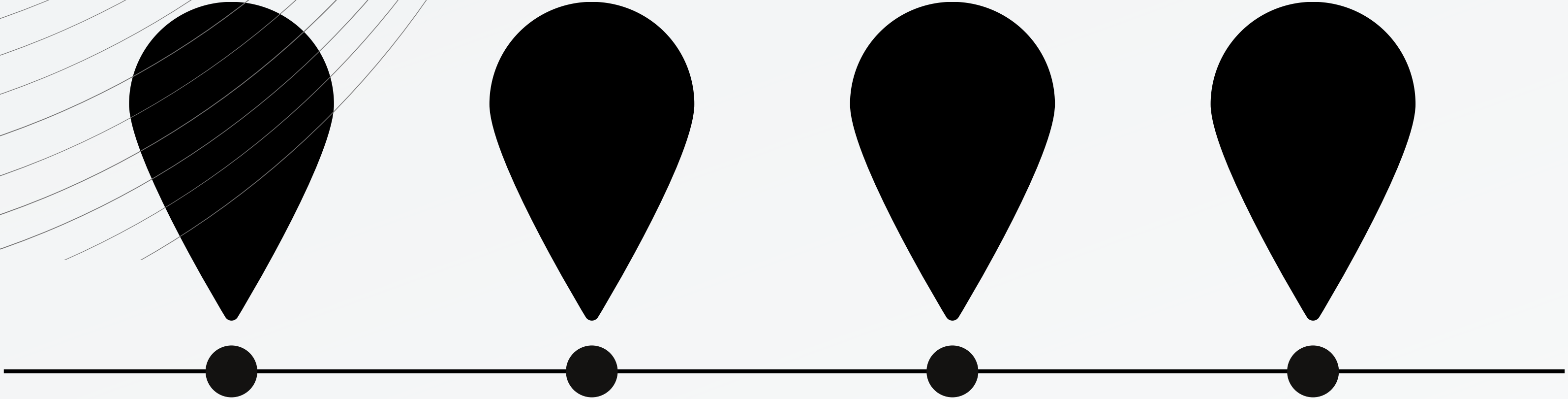
03

APPLICATION IN THE FIELD (HR)

04

PROMPT ENGINEERING MNEMONIC





1689

Lloyds of London

1900'S

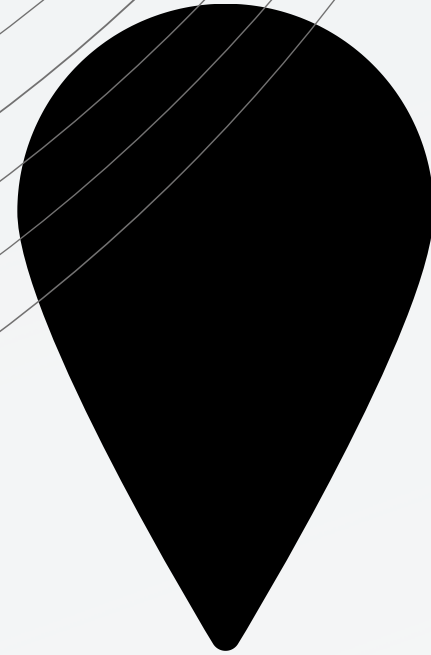
Alexander Markov

1958-60'S

Term AI

90'S-00'S

Autocorrect



2012

Alexnet



2016

MS Tay



2018

BERT



20'S AND

BEYOND

GPT, Perplexity, Claude,
Gemini, Einstein,
Watson, and beyond

A collection of colorful cartoon bugs on a green background. In the top left, a purple ant with large eyes and antennae is shown. Below it, a smaller purple ant is running. In the center, a large green caterpillar with yellow spots and a smiling face is visible. To the right, a red ladybug with black spots and a smiling face is shown. At the bottom, a blue insect with large eyes and antennae is visible. The text "BUGS???" is centered in white.

BUGS???

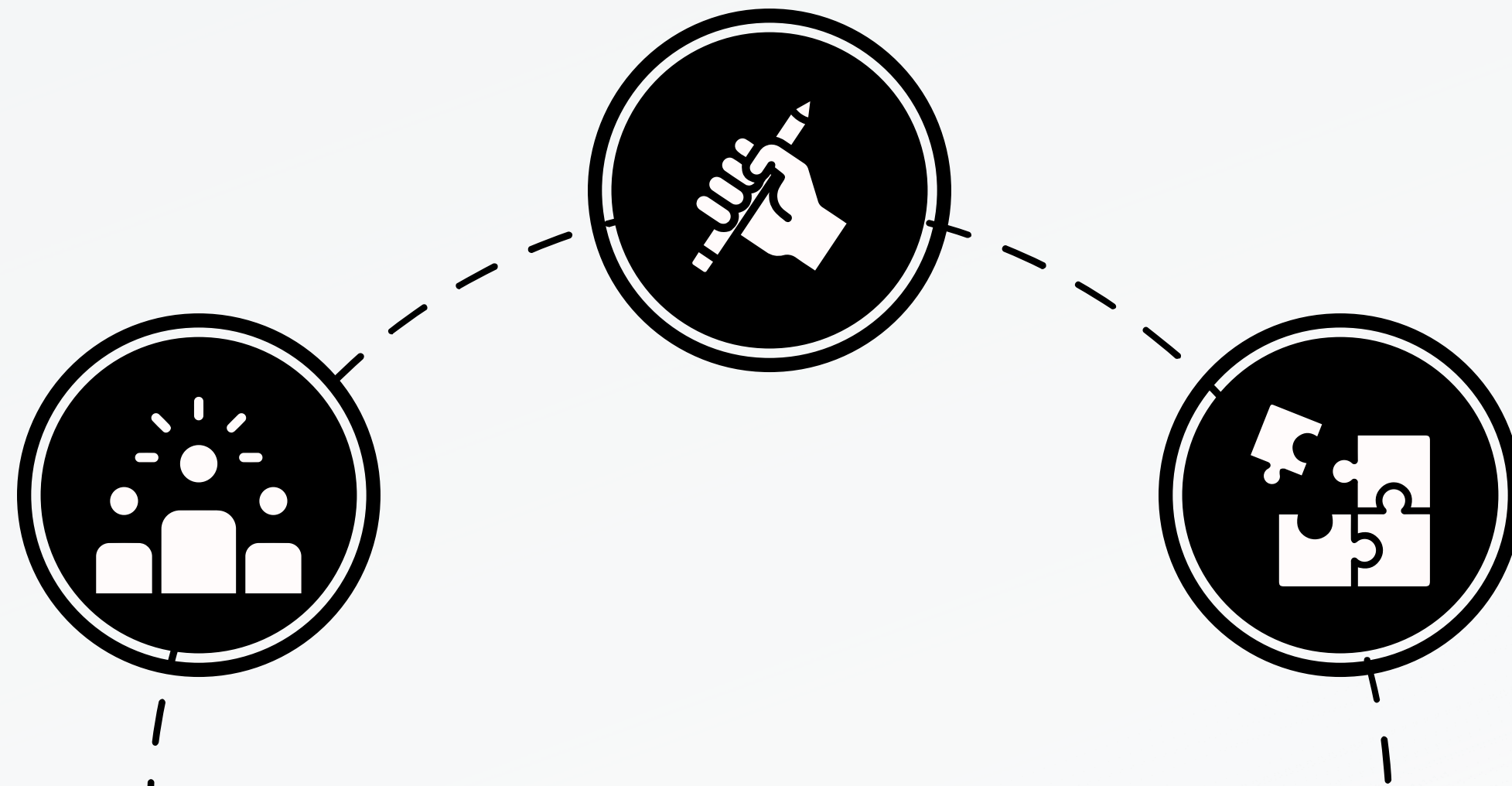
DATA SECURITY AND PRIVACY

FERPA

HIPAA

COPPA

GDPR



Usage Data: We **may** automatically collect information about your use of the Services, such as the types of content that you view or engage with, the features you use and the actions you take, as well as your time zone, country, the dates and times of access, user agent and version, type of computer or mobile device, and your computer connection.

NORA

When you interact with Gemini Apps, Google collects your Conversations Location
Feedback Usage information

When Gemini is your mobile assistant, Google processes additional information (such as info from your devices and services, permissions, installed apps, screen context) to understand your prompt, respond to you, and give you hands-free help.

When you use Gemini Extensions, your data is shared between Gemini Apps and other Google apps and services, so that Gemini Apps can respond to you better.



Go read Dr. Elizabeth Adams' advice on ethical AI

<https://pacscenter.stanford.edu/person/elizabeth-adams/>

In some cases, the words most likely to appear next may not be the most factually accurate. For this reason, you should not rely on the factual accuracy of output from our models.




Be a good human

Please be a good human when using AI Products and don't use them to create Products that violates these terms or Canva's [Acceptable Use Policy](#), and we will suspend you if you are using it in this way.

In addition to the matters listed in our [Acceptable Use Policy](#), it is prohibited to:

- Mislead anyone that the content generated by AI Products is human-generated;
- Provide medical advice or any content regarding the treatment, prevention, or diagnosis of any disease or condition;
- Provide legal or financial advice;
- Generate contracts or legally binding obligations;



**Human Connection -
Do not sleep on it!!!**

Human Connection

Humans get context

Humans get dialogue

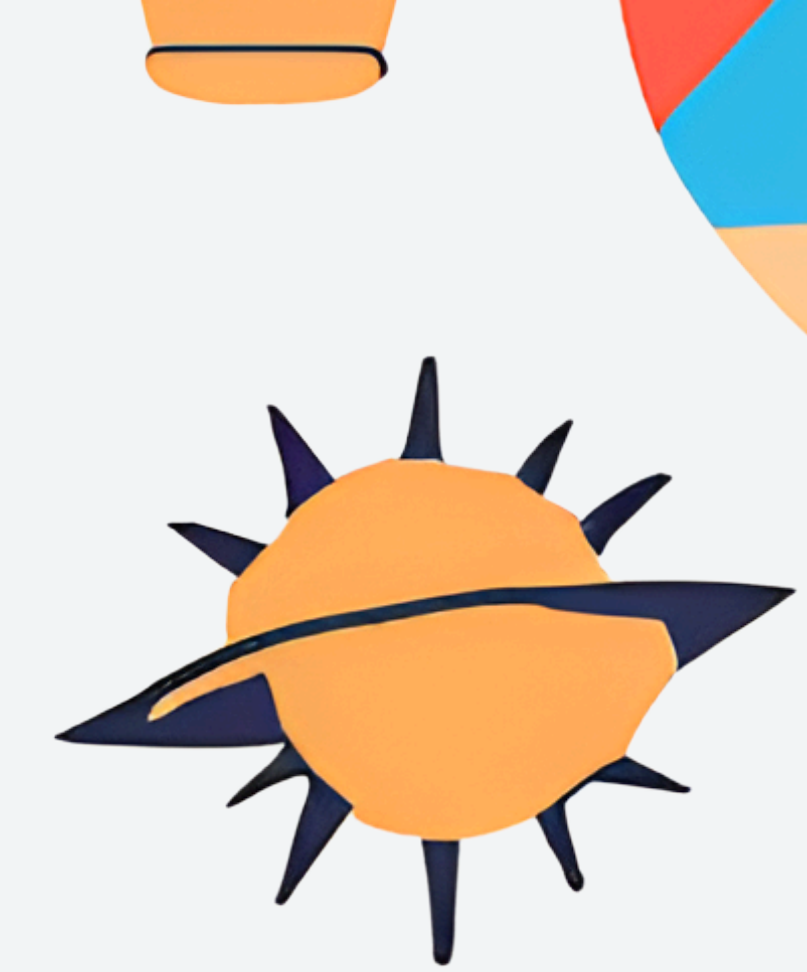
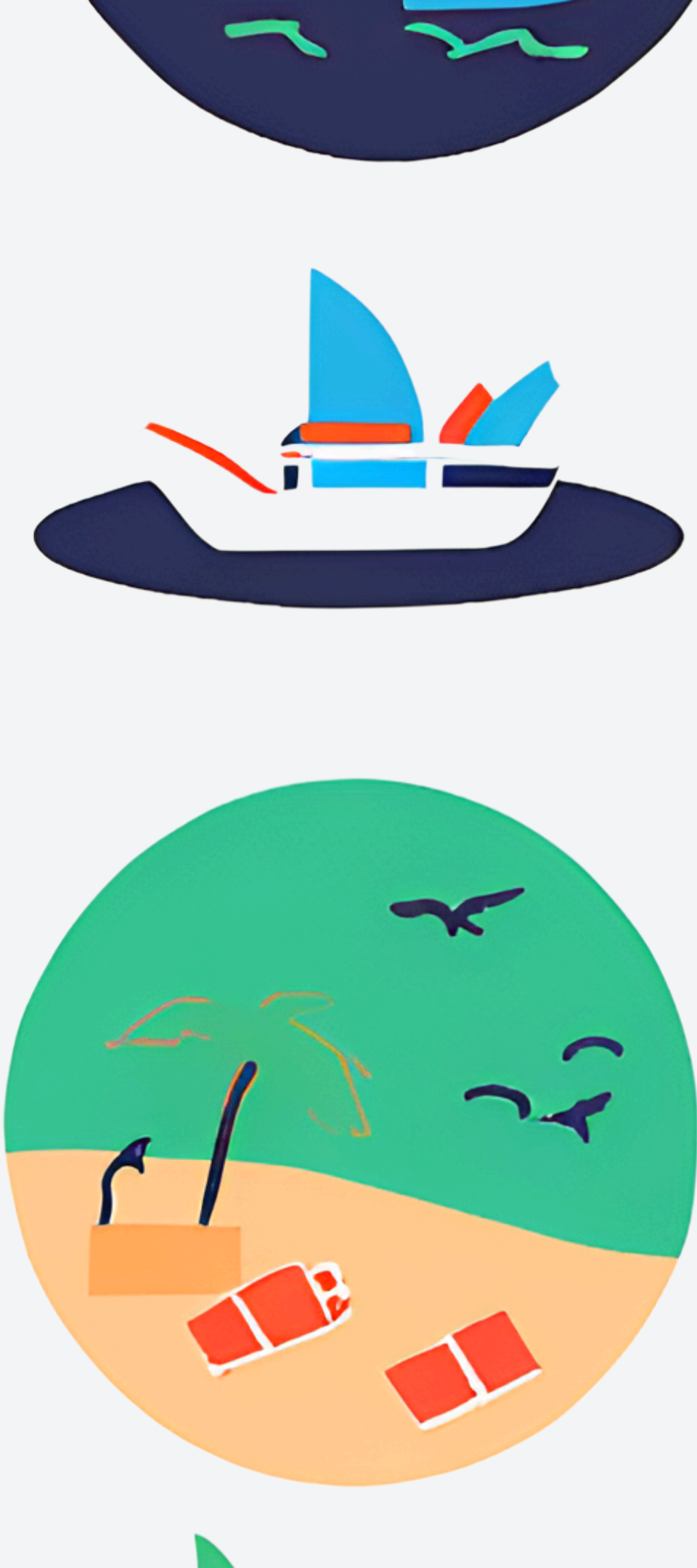
Humans get confused

Humans get common sense

Build an AI-Friendly Culture



And so much more...



Tell me about your recent trip...



Prompt Engineering - Sounds pretty cool, right?

C - Character

R - Request

A - Audience

F - Format/Features

T - Tone

Y - Your Extra's / Yes, but



Human Resources

[iPeople](#) 

[Benefits](#) 

[ISU Jobs](#) 

**HR and LLM's
Good buddies?**

Hiring & Recruitment

Hello, Derek

How can I help you today?

Explain the following code step-by-step in detail



Ideas to surprise a friend on their birthday



Improve the readability of the following code



Settle a debate: how should you store bread?



Humans review some saved chats to improve Google AI. To stop this for future chats, turn off Gemini Apps

I would like to post a position vacancy at Illinois Central College for a new adjunct professor. Acting as the advertising recruiter for this position, could you please offer a short two to three sentence summary of teaching at ICC that includes some of the attractive benefits of serving as a junior college instructor? After that, could you please construct a job description that includes a general summary, a typical breakdown of duties by percent, and some standard qualifications that might be desired and required to stand out as a premiere instructor at a premiere junior college? Headers would be great, and a reference list of how you found this information would also be great at the end.



Teaching at Illinois Central College offers a rewarding opportunity to shape young minds and contribute to the vibrant tapestry of our community. As an adjunct professor, you'll enjoy the flexibility of balancing teaching with your other commitments while making a profound impact on students' lives.

Adjunct Professor Position

General Summary

Illinois Central College seeks a dynamic and experienced adjunct professor to teach [Course Name] in the [Department] department. The successful candidate will be responsible for delivering high-quality instruction, fostering student learning, and contributing to the college's mission.

Duties and Responsibilities (Approximate Percentages)

- **Instruction:** 70% - Develop and deliver engaging course content, assess student performance, and provide timely feedback.
- **Student Advising:** 15% - Advise students on academic progress, career goals, and course selection.
- **Curriculum Development:** 10% - Contribute to curriculum development and

Training & Development

[New Thread](#)

Ctrl I

[🏠 Home](#)[🔍 Discover](#)[📖 Library](#)[👤 Sign in](#)

90-Day Plan

Focus: Performance Optimization and Team Integration

Goals:

1. Meet or exceed all key performance indicators
2. Contribute to team knowledge sharing and best practices
3. Demonstrate proficiency in handling complex inquiries

Key Activities:

- Consistently handle 20-30 calls per day
- Achieve 9-minute average handle time
- Participate in team meetings and contribute ideas for process improvement
- Cross-train in additional areas of expertise
- Mentor newer team members

Performance Metrics:

- Average handle time of 9 minutes or less
- Customer satisfaction score of 90% or higher
- Successful resolution of 85% of inquiries without escalation
- Positive feedback from team members and leadership

Resources:

- Performance dashboards
- Team collaboration tools
- Advanced troubleshooting guides

Acting as a manager for a large insurance organization in the midwest, can you craft a 30/60/90 day plan of development for a new employee who is going to be onboarded in one of our call centers? I am hoping to have this document be something that we can use to track growth and success, and be something that can be used as a resource and conversation point during one-on-one meetings for both the employee and myself. I would like this to be one page for the 30 day expectations, one page for the 60 day expectations, and one page for the 90 day expectations. Please show resources you used as a works cited at the end of the complete document. If it helps, the individuals main job description duties are as followed:

Responsibilities

☰ Related

[What are some key performance indicators to track for a new call center employee](#) +

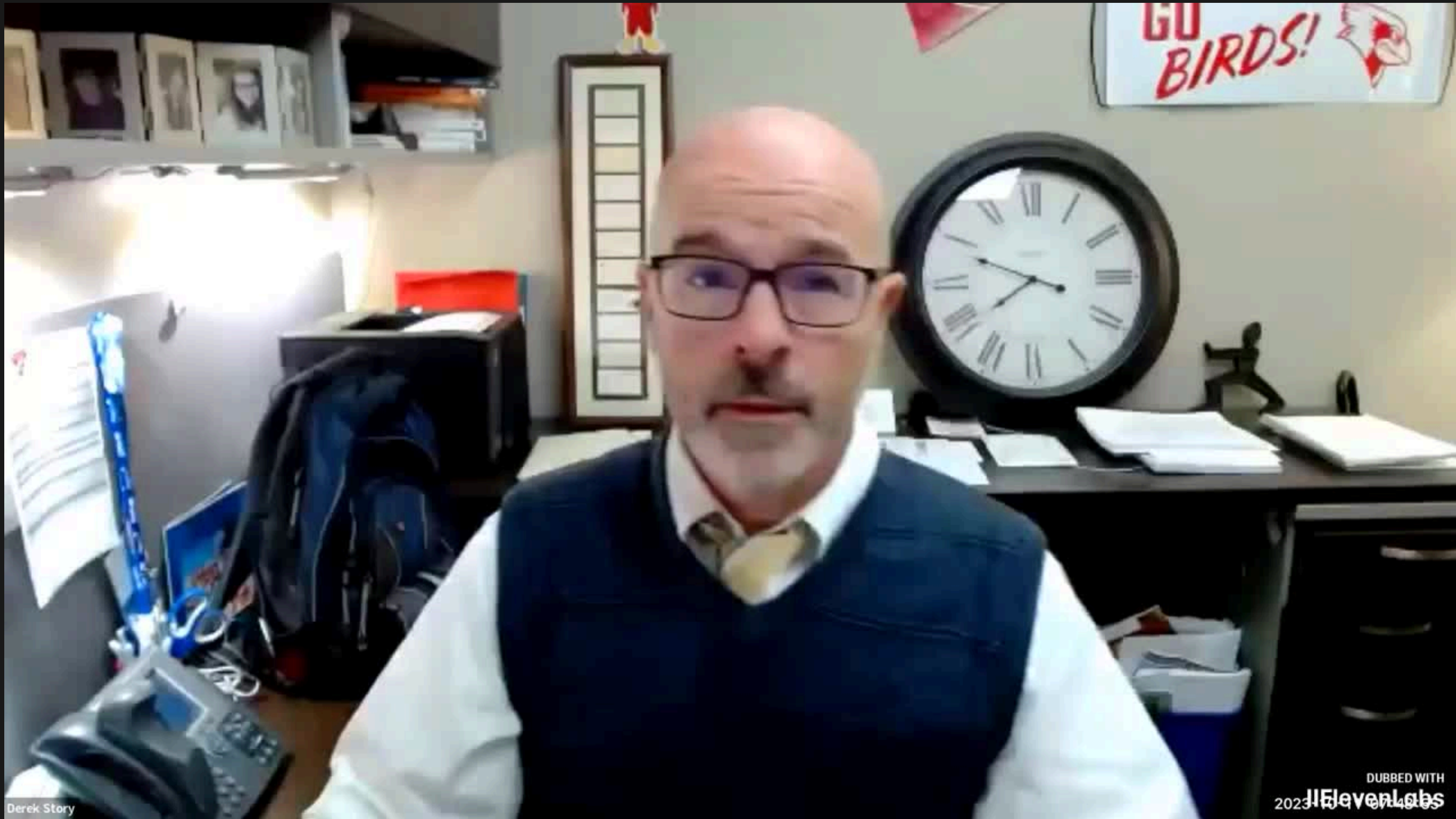
[How can I ensure the new employee feels integrated into the remote team](#) +

[What specific training sessions should be included in the first 30 days](#) +

[How can I measure the success of the new employee's onboarding process](#) +

[What are some common challenges new call center employees face and how can they be addressed](#) +

Self-Service/Automation



Derek Story

DUBBED WITH
ElevenLabs
2023

Policy/Procedures



Final Thoughts...

Questions/Comments?

References?

Gideon Lewis-Kraus from Wired Magazine on the history of Autocorrect

Lloyd's of London homepage on some initial predictive analytics

Gallaughers Information Technology for Today's Manager on Markov, Alexnet, Tay, and more

Paul Bahr from Peachtree Sound on Twitch, AI for entertainment, AR, and more

Dr. Terri Horton (futurist, consultant, author) on onboarding, employee development, policy development

TED, CUPA-HR, SHRM, and HBR on AI and the intersection of business specifically in the human fields

Elizabeth Adams on the ongoing and historical bias in AI and technology

Connor Grennan on AI in the workplace

Anna Kourouniotis at Duke University on Copilot

Additional support from:

IdentityReview.com (AI in HRM)

wellable.co (top HR AI tools)

Forbes.com (pitfalls of data driven AI)

Gartner.com (AI in HR)

CoinTelegraph (AI Human Resources and the Risks)

Derek Story

djstory@ilstu.edu